



# SALTEX POLAR

YOUR GUIDE IN SPORTS



FOR PRECISE ACTION



Saltex Oy is the northernmost producer of artificial grass in the world, with its modern factory located in Finland. The Finnish people are known for their drive for innovation and the excellent quality of their products. Saltex Oy focuses on developing artificial grass systems that meet and exceed the expectations of players and owners of sport facilities throughout the world. The latest addition to these developments is Saltex Polar; the strongest and most resilient fiber in the market. Ready to fight all the elements of nature!

Your guide in sports

# SALTEX POLAR

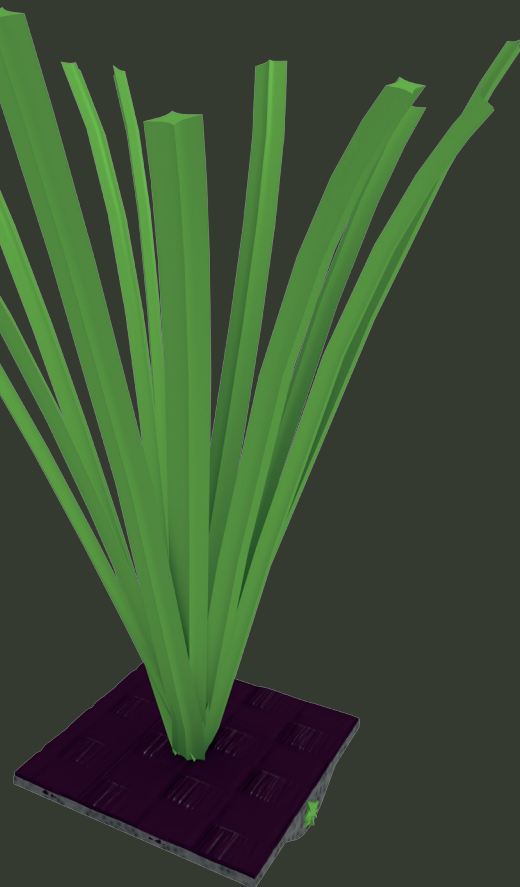


The latest fiber development of Saltex is the markets leading product for top football with high usage. Due to its unique shape and composition it will retain the highest possible quality throughout its lifespan.

The unique shape of Saltex Polar ensures optimal playing characteristics in all weather conditions and always allows the players to enjoy the game on an optimal grass field.

## SALTEX POLAR

1. Unique fiber shape
2. Great resilience
3. Extremely durable
4. Uniform playing characteristics
5. Optimal look & Feel



## BACKING/PU

The standard artificial grass products are usually backed with SBR latex. However, Saltex wanted to incorporate more functionality, quality and sustainability in the backing and therefore selected PU as a material. By using PU backing the following advantages are reached:

1. Better pile anchorage
2. Better handling of wet weather conditions
3. Better interaction with seam glue
4. Better for the environment

## MTRX

Saltex Polar is also available in MTRX. Whereas the traditional artificial grass products have a carpet-like structure; the matrix structure makes the Polar fibers spread in a natural pattern. With natural grass as our inspiration we have created the most natural looking, feeling and playing artificial grass field available.

## BLUE VISION

Saltex Blue Vision goes beyond eco-efficiency. The Blue Vision approach means not only minimising negative ecological footprints and pollution but also making the largest possible positive footprint.

This is achieved by developing as environmentally-friendly products and processes as possible and seeing waste as a reusable material. In an eco-effective mind, economic growth and ecological added value go hand in hand.

**THE NEXT STEP:** Please contact us for more information, samples and professional assistance:



### FINLAND

SALTEX OY  
Tel. +358 (0) 6 557 0700  
saltex@saltex.fi



### SWEDEN

STX SWEDEN AB  
Tel: +46 92 379 404  
stx@saltex.fi



### NORWAY

SALTEX AS  
Tel: +47 61 314 030  
post@saltex.no



### POLAND

SALTEX EUROPA SP. Z O.O  
Tel: +48 717 258 187  
gregory.zych@saltex.fi



### RUSSIA

SAL-TEX LTD  
Tel: +7 495 504 61 87  
info@saltex-grass.ru



Saltex Oy, Sahatie 1, FIN-62900 Alajärvi • Tel. +358 (0)6 557 0700 • Fax +358 (0)6 557 0733 • saltex@saltex.fi • www.saltex.fi